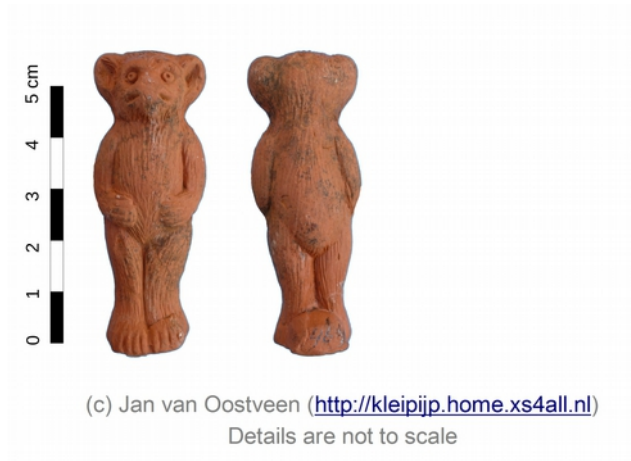


GE-TO-AN

1. Inventory number GE-TO-AN1
2. Type code
3. Dating 1900-1940
4. Measurements See figure
- 5a. Ware, fabric Redware
- 5b. Surface treatment None
- 5c. Decoration Dog
- 6a. Base Flat
- 6b. Handle's e.g.
- 6c. Miscellaneous, marks
7. Name Toy
8. Provenance Germany, Westerwald
9. References



1. Inventory number GE-TO-AN2
2. Type code
3. Dating 1900-1940
4. Measurements See figure
- 5a. Ware, fabric Redware
- 5b. Surface treatment None
- 5c. Decoration Bear
- 6a. Base Flat
- 6b. Handle's e.g.
- 6c. Miscellaneous, marks
7. Name Toy
8. Provenance Germany, Westerwald
9. References



1. Inventory number GE-TO-AN3
2. Type code
3. Dating 1930-1960
4. Measurements See figure
- 5a. Ware, fabric Pipe-clay
- 5b. Surface treatment None
- 5c. Decoration Sheep
- 6a. Base Flat
- 6b. Handle's e.g.
- 6c. Miscellaneous, marks
7. Name Toy
8. Provenance Germany, Westerwald
9. References



1. Inventory number GE-TO-AN4
2. Type code
3. Dating 1940-1960
4. Measurements See figure
- 5a. Ware, fabric Pipe-clay
- 5b. Surface treatment None
- 5c. Decoration Dog ('kakkertje')
- 6a. Base Flat
- 6b. Handle's e.g.
- 6c. Miscellaneous, marks MADE IN GERMANY
7. Name Toy
8. Provenance Germany, Westerwald
9. References



(c) Jan van Oostveen (<http://kleipijp.home.xs4all.nl>)
 Details are not to scale

1. Inventory number GE-TO-AN5
2. Type code
3. Dating 1940-1960
4. Measurements See figure
- 5a. Ware, fabric Pipe-clay
- 5b. Surface treatment None
- 5c. Decoration Pig
- 6a. Base Four feet
- 6b. Handle's e.g.
- 6c. Miscellaneous, marks
7. Name Toy
8. Provenance Germany, Westerwald
9. References



Version	Reason issue
10.0	Initial version